

Key to Instrumentation

| Symbol | Instrument | Watts | Count |
|--------|------------------------------------------|-------|-------|
| | 50 Degree ETC Lustr 2 Source 4 | 575w | 6 |
| | ETC Lustr D40 Medium Round with Barndoor | 110w | 15 |
| | ETC Lustr D40 Medium Oval with Barndoor | 110w | 4 |
| | ETC Lustr D40 Wide Oval with Barndoor | 110w | 3 |
| | ETC Lustr 11" with Barndoor | 125w | 7 |
| | Colortran 6/50 40 Degree | 575w | 9 |
| | Altman 6" x 9" | 575w | 12 |
| | Altman 6" Fresnel with Barndoor | 750w | 3 |
| | EC 6" Fresnel with Barndoor | 750w | 13 |
| | 6" R40 FL Striplight 12 cell 4 circuit | 450w | 5 |
| | Chauvet Intimidator Spot LED 150 | 88w | 4 |
| | Chauvet Intimidator Wash LED 150 | 110w | 5 |
| | Refrigerator Light (40w) | 40w | 1 |

Template

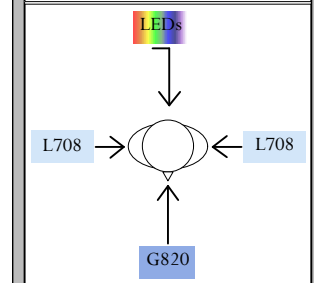


Template A
Linear City
GAM 739
A size
Count: 1

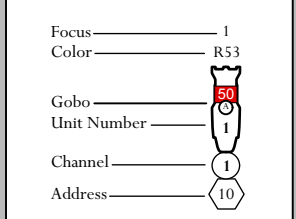
Notes

- For focus, please have extra top hats, half hats, barndoors, and cuts of R119 and R132 available.
- Please load all color, templates, and barndoors prior to focus.
- If anything is suspicious or confusing, contact me at collin.w.hall@gmail.com or (901) 493-6806.

System Legend



Label Legend



THE LACY PROJECT

Produced by All Campus Theatre
LIGHT PLOT

Lighting Designer: Collin Hall
Director: Keegan Tucker
Scenic Designer: Casey Hall
Costume Designer: Courtney Tipps
Sound Designer: Andrew Shipman
Stage Manager: Kelli Cool

Revision Number: 4 Revision Date: 2/26/19
Scale: 1/4" = 1'0" Plate Number: 1 of 2

| House | Works | Lobby |
|---------------------------|---------------------|--------------|
| Channel: 201 | Channel: 202 | Channel: 203 |
| Addresses: 87 88 94 | Addresses: 91 92 | Address: 93 |